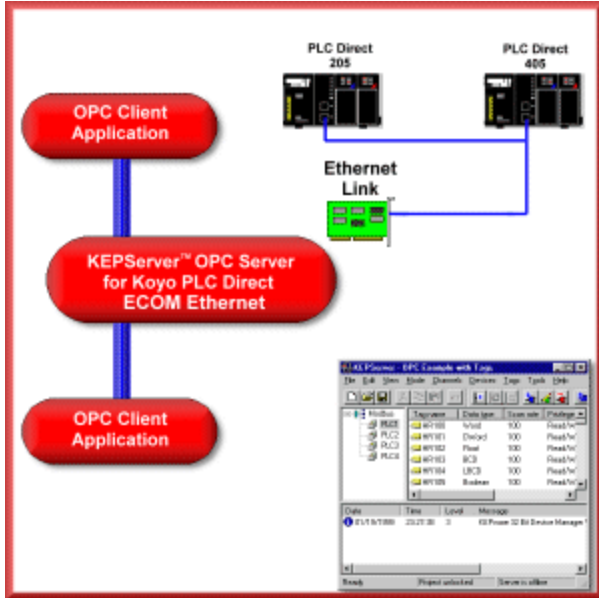


# AutomationDirect ECOM OPC Server

## Overview

KePware's 32 bit PLC Direct Ethernet™ device driver works in conjunction with our OPC Server KEPServerEX, to provide data exchange between OPC Clients and PLC Direct Ethernet UDP protocol compliant PLCs. KEPServerEX automatically optimizes your data acquisition based on client demand. Data integrity is ensured with our extensive error handling.



## Supported Devices:

Device	Note
DL-230	
DL-240	
DL-250	
DL-430	
DL-440	
DL-450	via an Hx-ECOM module.

## Features:

### Specific Features

- Supports Automatic Tag Database Generation.
- All data types supported.
- Memory Types Supported: X, Y, C, SP, T, CT, S, V, GX

### General Features

#### General

- Multi-threaded design ensures optimum performance
- Supports up to 16 concurrent serial port and PC card configurations
- Full Time On-line operation allows on the fly changes
- Build Diagnostic system with protocol display
- OPC Diagnostic feature provides a real-time and historical view of OPC events that occur between any OPC client and the server.
- Modem support included on all Serial port drivers
- CSV file import and export of Server tags for easy configuration on large projects

- Supports running as a Windows service
- Supports direct scaling of device data which allows raw device data to be converted to engineering units for OPC client applications
- Online full-time
- Includes a built-in User Manager that allows complete control over what types of functionality each individual user can access
- Allows the user to specifically select a NIC card for use with any Ethernet driver or serial driver running in Ethernet Encapsulation mode.

## OPC

- Supports OPC 1.0 Data Access Specifications
- Supports OPC 2.05a Data Access Specifications
- Supports OPC 3.0 Data Access Specifications
- Includes OPC 2.0 Automation Interface and comprehensive Visual Basic examples

## DDE

- AdvancedDDE supports RSView32 and Cimplicity
- FastDDE and SuiteLink Support Wonderware FactorySuite 2000
- CF-Text supports all DDE aware applications
- NetDDE supports shared network access to device data

## Required Software and Hardware

### Supported Operating Systems

- Windows NT
- Windows 2000
- Windows Server 2003
- Windows XP

### PC Hardware

#### Minimum

- 400 Mhz Pentium CPU
- 128 Megs of RAM
- 100 Megs of Free Hard Drive Space

#### Recommended

- 600 Mhz Pentium CPU
- 512 Megs of RAM
- 100 Megs of Free Hard Drive Space

### Hardware Requirements

- For Device and Hardware Requirements see the **Devices** table.

### Communications Protocol:

- Ethernet using Winsock V1.1 or higher.