

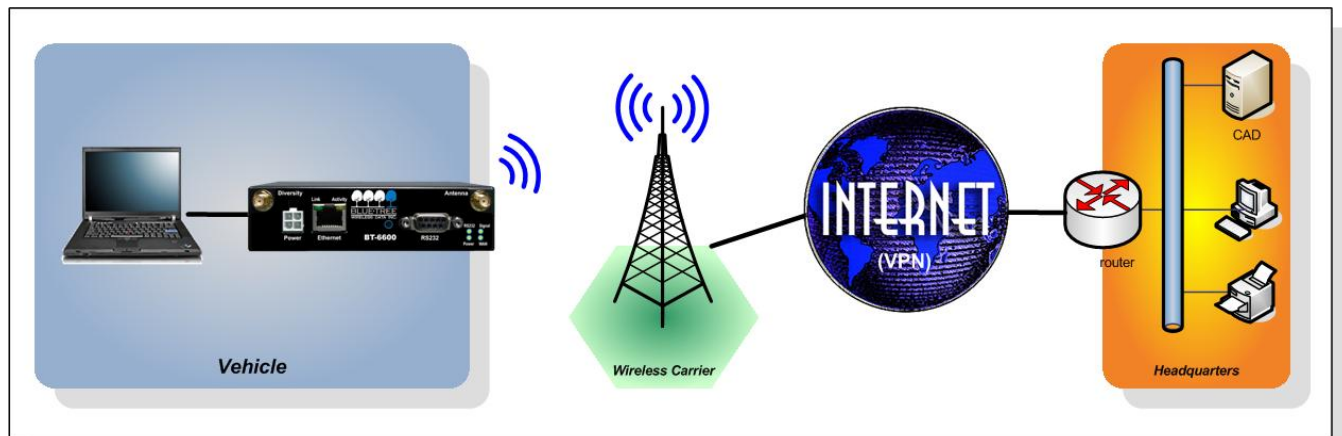


BlueTree 6000 Series

The BT-6600 series offers high speed internet connectivity over the EVDO Rev. A cellular network to in-vehicle mission critical applications.

Whether to issue violations, look up license plates, report status of accidents, transmit patient data, or enhance dispatch, the BT-6600 provides mobile workers a continuous feed for their real-time and bandwidth demanding applications.

- Mobile Resource Management
- Public Safety (Police, Fire, Ambulance and EMS)
- Transit
- Field Force Automation



Mobile Data

Benefits

- ▶ Provides ubiquitous cellular coverage with no maintenance fees
- ▶ Improves emergency response time
- ▶ Mobile transition of patient data
- ▶ Increases worker's safety by optimizing communication with dispatch center
- ▶ Improves incident management and route planning
- ▶ Provides broadband connectivity to multiple devices in the vehicle



Features

- ▶ Ultra-reliable always-on cellular link
- ▶ EVDO Rev. A speeds of up to 3.1 Mbps
- ▶ Rugged electrical and mechanical design
- ▶ Multiple interfaces: Ethernet, USB, Serial
- ▶ Remote diagnostics, configuration and updates
- ▶ Router and IP pass-through modes

Simple. Reliable. Wireless modems.

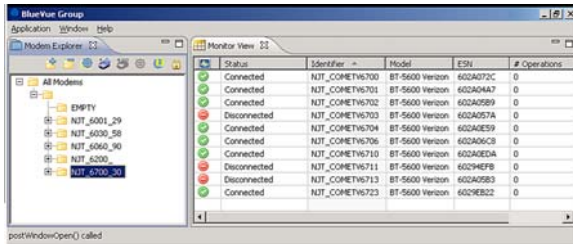
Mobile Data

Software Tools

The BlueTree 6600 can easily be configured, monitored and managed using the following BlueVue software applications.



BlueVue Device Manager
For initial setup and configuration



BlueVue Group
Enterprise application for remote monitoring and management of deployed modems



BlueVue Monitor
Quick and easy diagnostic dashboard

Product Specifications

Wireless Interface	Dual-band CDMA2000 EVDO Rev. A (with diversity) Backward compatible with 1xRTT and IS95
Peak Data Rates	Forward link (download): 3.1 Mbps, Reverse link (upload): 1.8 Mbps
Ethernet Interface	1x RJ45 Ethernet 10/100 auto-sensing
Serial Interface	1x RS-232 Serial DB9 115200bps
USB Interface	1x USB2.0 mini
LED Status Indicators	Power, WAN, Signal, RS232, Ethernet Link & Activity
Inputs & Outputs	1x Reset Button, 1x Digital Output, 1x Digital Input
Dimensions	BT-6600: Steel 120 x 96 x 32 mm (4.7" x 3.77" x 1.25"), 453g (1 lb)
Power Input	8 - 30 Vdc (12Vdc nominal)
Power Consumption	@ 12 Vdc Transmit: 155 mA average (Max. 443 mA), Standby: 55 mA
Environmental	Operating Temp: -40 to +75°C (-40 to 167°F) Shock: IEC68-2-27, Vibration: IEC68-2-6 Humidity: 5 to 95% non-condensing
Certification	EMC- FCC, part 15 and Industry Canada, ICES-003 Hazardous Locations - Class I, Div. 2, Groups A,B,C,D, UL1604 Electrical Safety - UL508/CSA22.2/14 (CUL)



BT-6600

Why Choose BlueTree?

Together with our parent company, SIXNET, LLC leaders in the automation industry for over thirty years, we deliver intelligent cellular modems for all M2M applications. BlueTree modems combine SIXNET's embedded Linux platform and open systems rugged Ethernet connectivity providing high security and unprecedented open systems advantages. BlueTree brings you a unified, intelligent, universally accessible platform for all your applications and real-time connectivity requirements. Whether you are a long standing customer or looking at BlueTree for the first time, our modems are designed with you in mind. Imagine the possibilities!

BlueTree Wireless Data Inc. is a leading developer and manufacturer of wireless modems and software solutions for commercial and industrial applications. Blue Tree Wireless' modems are designed to operate on cellular data networks worldwide enabling M2M applications in the Public Safety, Fleet Management, Field Service, SCADA and telemetry markets. BlueTree Wireless Data Inc. is a division of SIXNET, LLC.

Simple. Reliable. Wireless modems. 3/28/08

